

# Parkheath

*Sold on Service*

---

**Belsize Avenue NW3**  
**Asking Price £1,075,000**



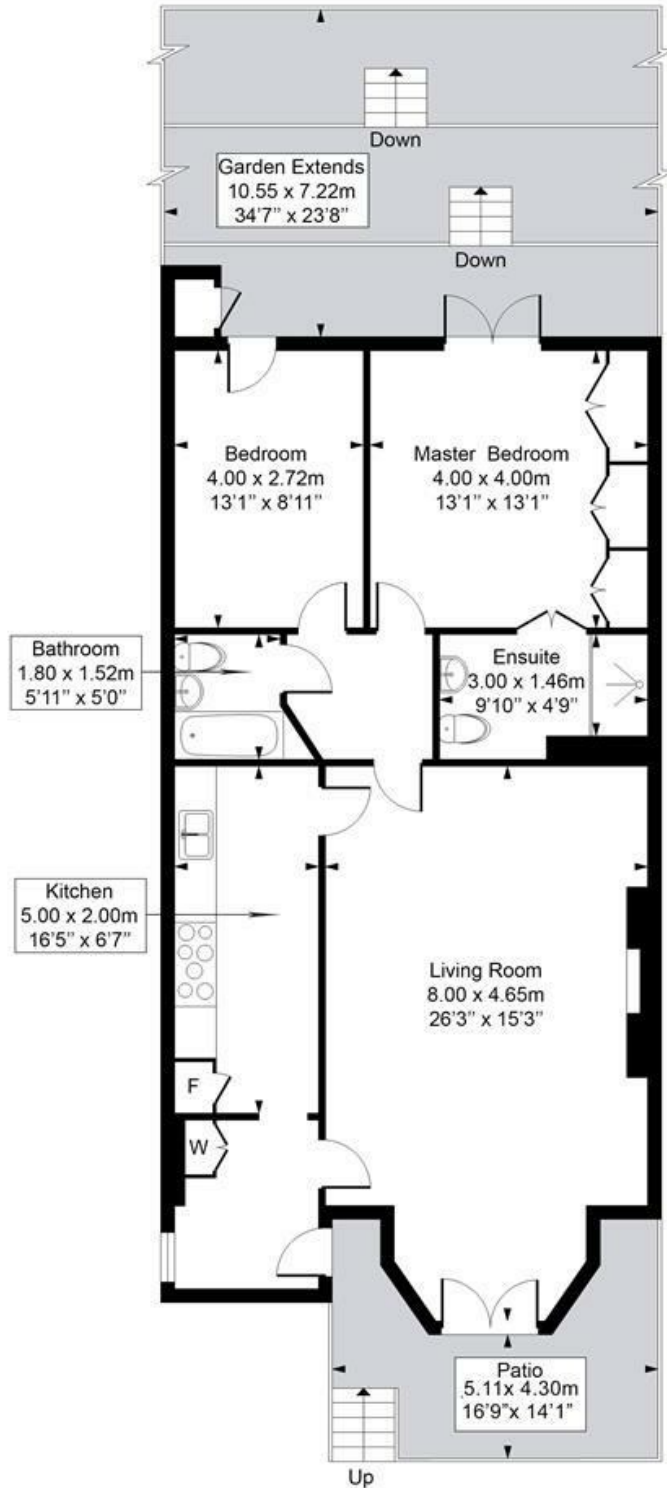
Delightful 2 double bedroom garden flat  
Well tended 35ft private rear garden  
Beautiful White stucco fronted conversion  
Over 1000 sq ft on entire lower floor  
Located next to Belsize Village

Impressive 26ft reception with wood flooring  
13ft main bedroom with en suite wet room  
16ft kitchen with appliances  
Share of freehold  
Spacious feeling throughout

Belsize Park Office 020 7431 3104

# Belsize Avenue

Approximate Gross Internal Area = 95 sq.m / 1019 sq.ft



This plan is for layout guidance only. Drawn in accordance with RICS guidelines. Not drawn to scale unless stated. Windows & door openings are approximate. Whilst every care is taken in the preparation of this plan, please check all dimensions, shapes & compass bearings before marking any decisions reliant upon them.

ELLIE CLAIRE PHOTOGRAPHY LTD  
[www.ellieclairephotography.com](http://www.ellieclairephotography.com)

The particulars do not constitute part of an offer or contract. The particulars, including text, photographs and plans, are for the guidance only of prospective purchasers/tenants and must not be relied upon as statements of fact. The descriptions provided therein represent the opinion of the author and whilst given in good faith should not be construed as statements of fact. Nothing in these particulars shall be deemed a statement that the property is in good condition or otherwise or that any services or facilities are in good working order. All measurements are approximate